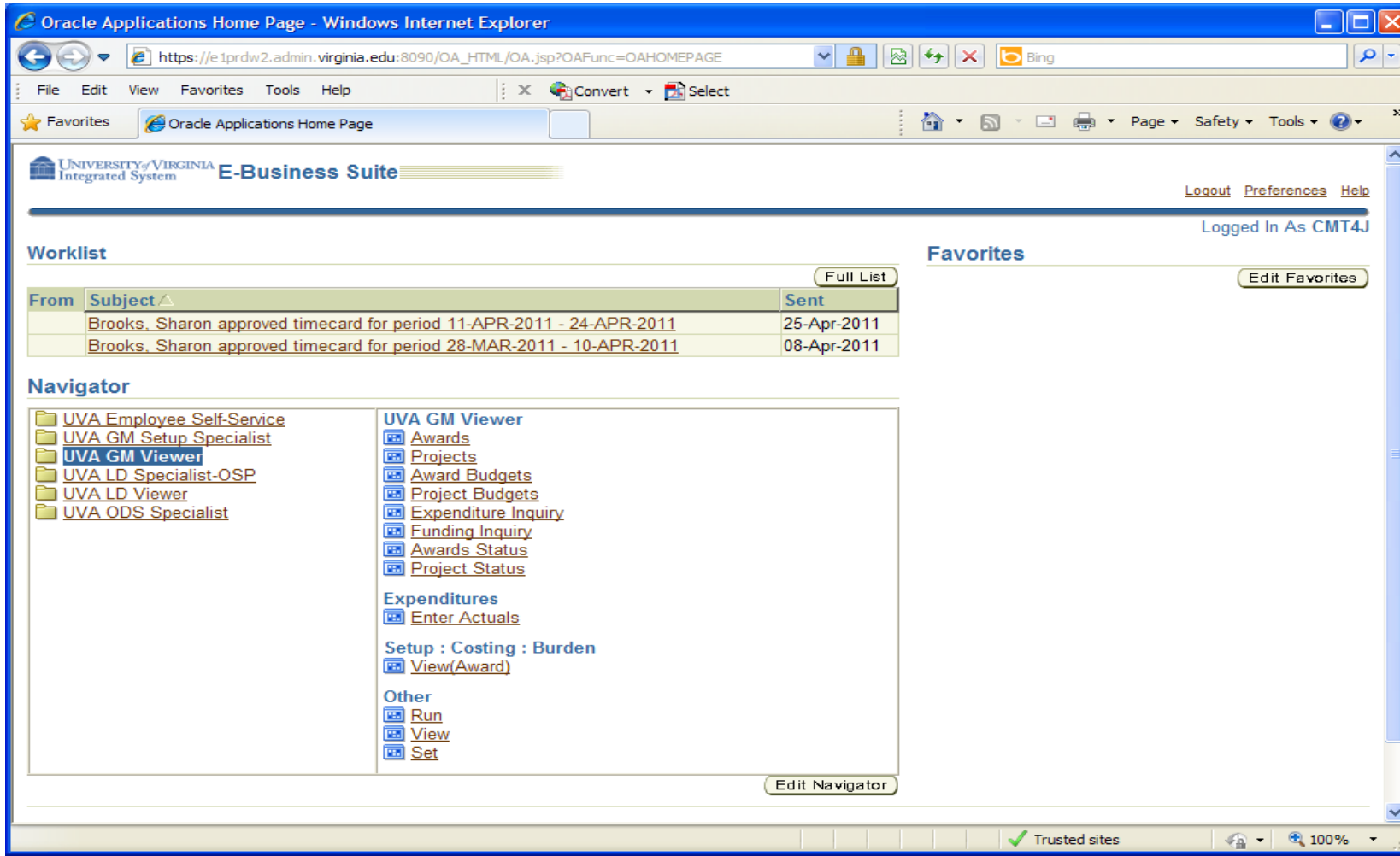


Does my project have transaction controls?

There are several ways to determine if your project has transaction controls:

- Look on your OSP Notice of Award form under the “Comments” section
- Log in to the Integrated System and select GM viewer (or any responsibility that allows you to view projects)



Oracle Applications Home Page - Windows Internet Explorer

https://e1prdw2.admin.virginia.edu:8090/OA_HTML/OA.jsp?OAFunc=OAHOMEPAGE

File Edit View Favorites Tools Help

Oracle Applications Home Page

UNIVERSITY of VIRGINIA Integrated System **E-Business Suite**

Logout Preferences Help

Logged In As CMT4J

Worklist

Full List

From	Subject	Sent
Brooks, Sharon	approved timecard for period 11-APR-2011 - 24-APR-2011	25-Apr-2011
Brooks, Sharon	approved timecard for period 28-MAR-2011 - 10-APR-2011	08-Apr-2011

Navigator

Edit Navigator

- UVA Employee Self-Service
- UVA GM Setup Specialist
- UVA GM Viewer**
- UVA LD Specialist-OSP
- UVA LD Viewer
- UVA ODS Specialist

- UVA GM Viewer
 - Awards
 - Projects
 - Award Budgets
 - Project Budgets
 - Expenditure Inquiry
 - Funding Inquiry
 - Awards Status
 - Project Status
- Expenditures
 - Enter Actuals
- Setup : Costing : Burden
 - View(Award)
- Other
 - Run
 - View
 - Set

- Select “Projects”
- Enter the Project number in the “Number” field and select “Find.”

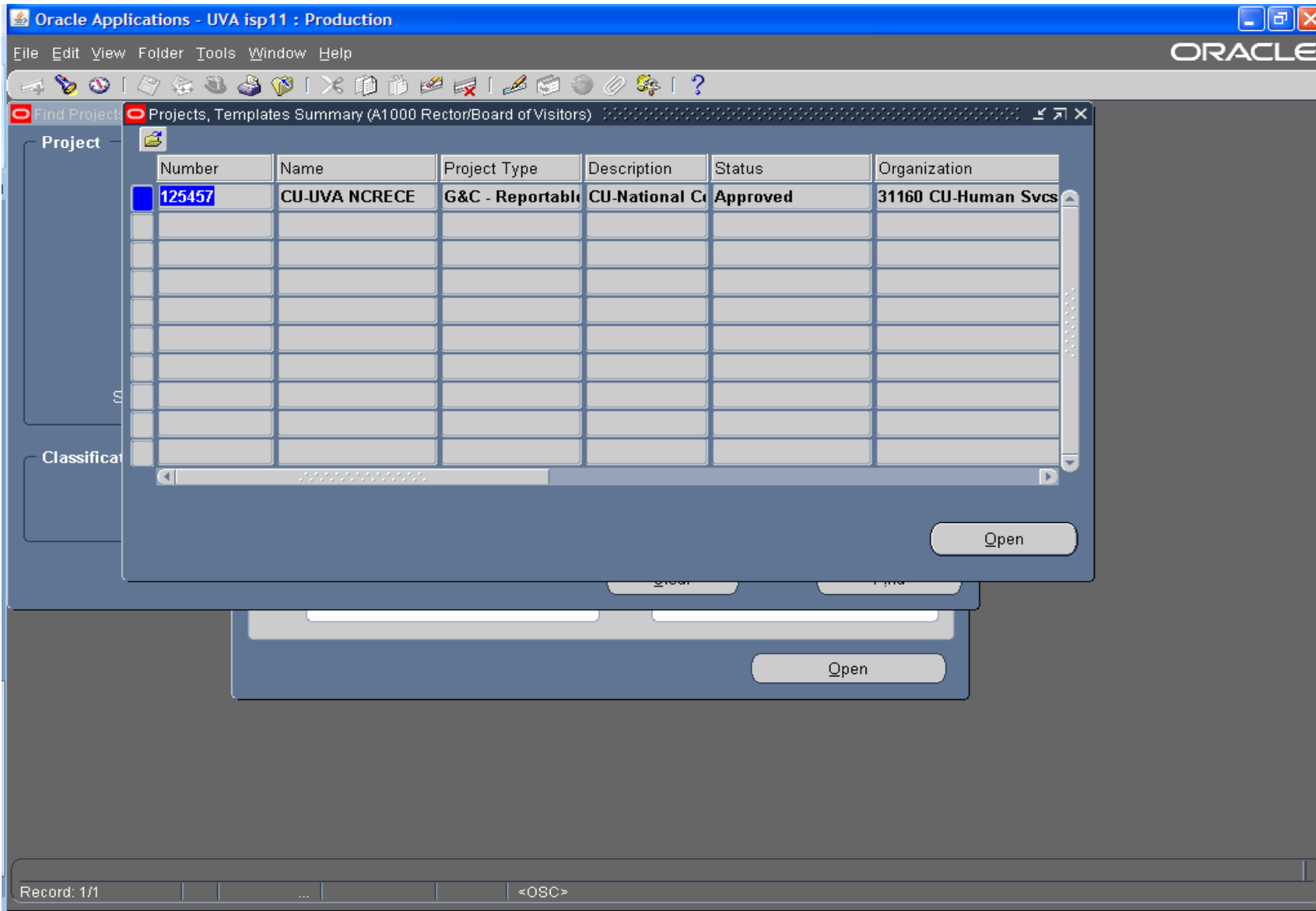
The screenshot shows the Oracle Applications interface for UVA isp11 in Production mode. The main window title is "Oracle Applications - UVA isp11 : Production". The menu bar includes "File", "Edit", "View", "Folder", "Tools", "Window", and "Help". The toolbar contains various icons for navigation and editing. The "Find Projects (A1000 Rector/Board of Visitors)" dialog box is open, displaying the following fields:

- Project**
 - Search For: **Projects, Templates** (dropdown)
 - Number: **125457**
 - Name: **CU-UVA NCRECE**
 - Long Name: **CU-UVA NCRECE**
 - Type: (empty)
 - Organization: (empty)
 - Status: (dropdown)
 - Product Source: (empty)
 - Source Reference: (empty)
- Key Member**
 - Name: (empty)
 - Number: (empty)
 - Role: (empty)
- Customer**
 - Name: (empty)
 - Number: (empty)
 - Relationship: (empty)
- Classification**
 - Category: (empty)
 - Class Code: (empty)

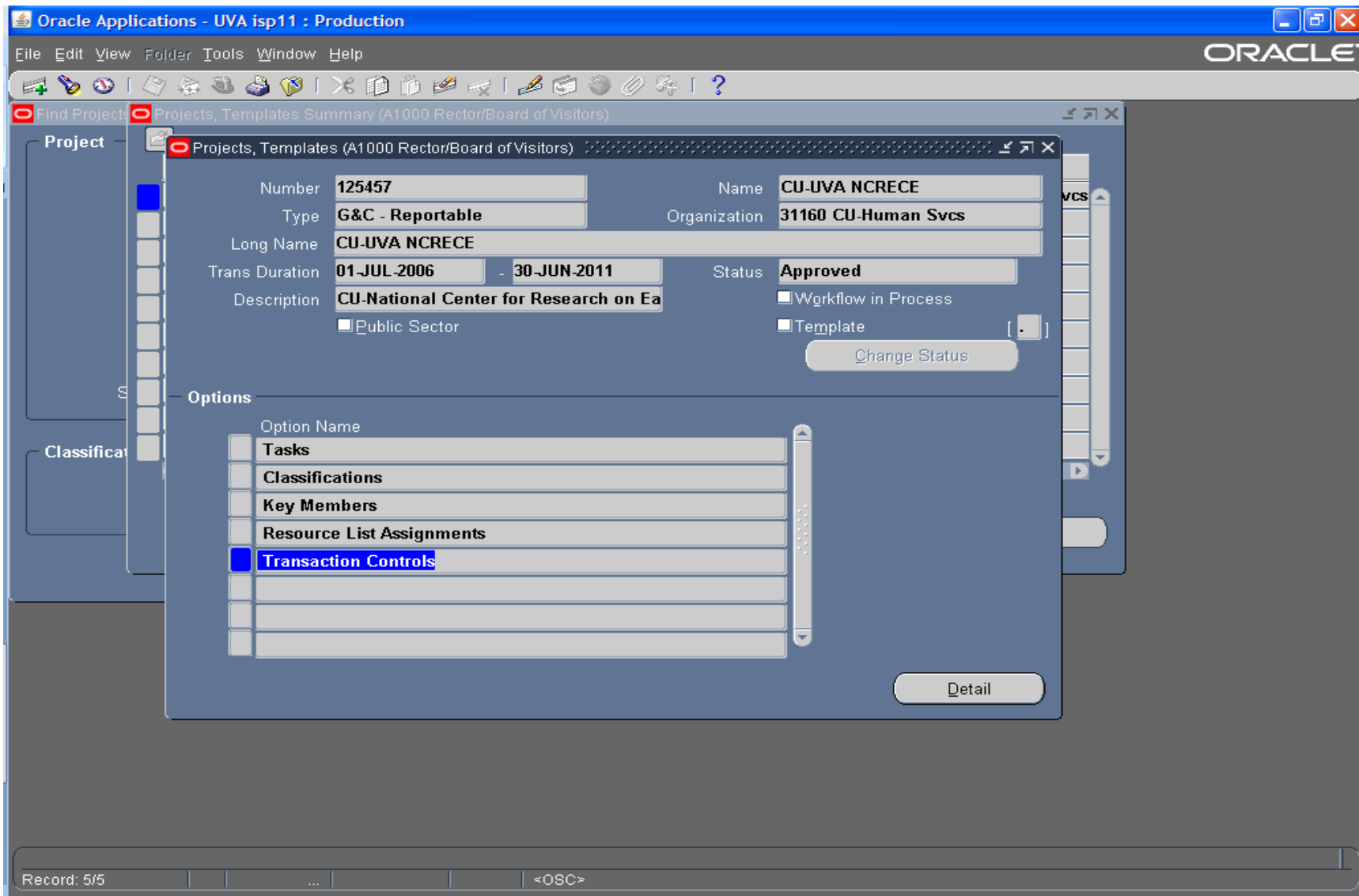
Buttons: "Clear", "Find", and "Open".

Record: 1/1 | ... | <OSC>

- Open the Project



- Select the box to the left of “Transaction Controls”



- You can scroll down and view the expenditure types that are either excluded or included, depending on the template being used. (View the templates at <http://www.virginia.edu/sponsoredprograms/TransactionControlsHome.htm>)
- This particular award is federal, so the expenditure types listed above are NOT currently chargeable to the project
- Once a transaction control is “unlocked” via a CAS form, the expenditure type will disappear from this list.

Oracle Applications - UVA isp11 : Production

File Edit View Folder Tools Window Help

ORACLE

Find Projects Projects, Templates Summary (A1000 Rector/Board of Visitors)

Projects, Templates (A1000 Rector/Board of Visitors)

Transaction Controls (A1000 Rector/Board of Visitors) - 125457

Limit to Transaction Controls

Scheduled Expenditure Only

Chargeable

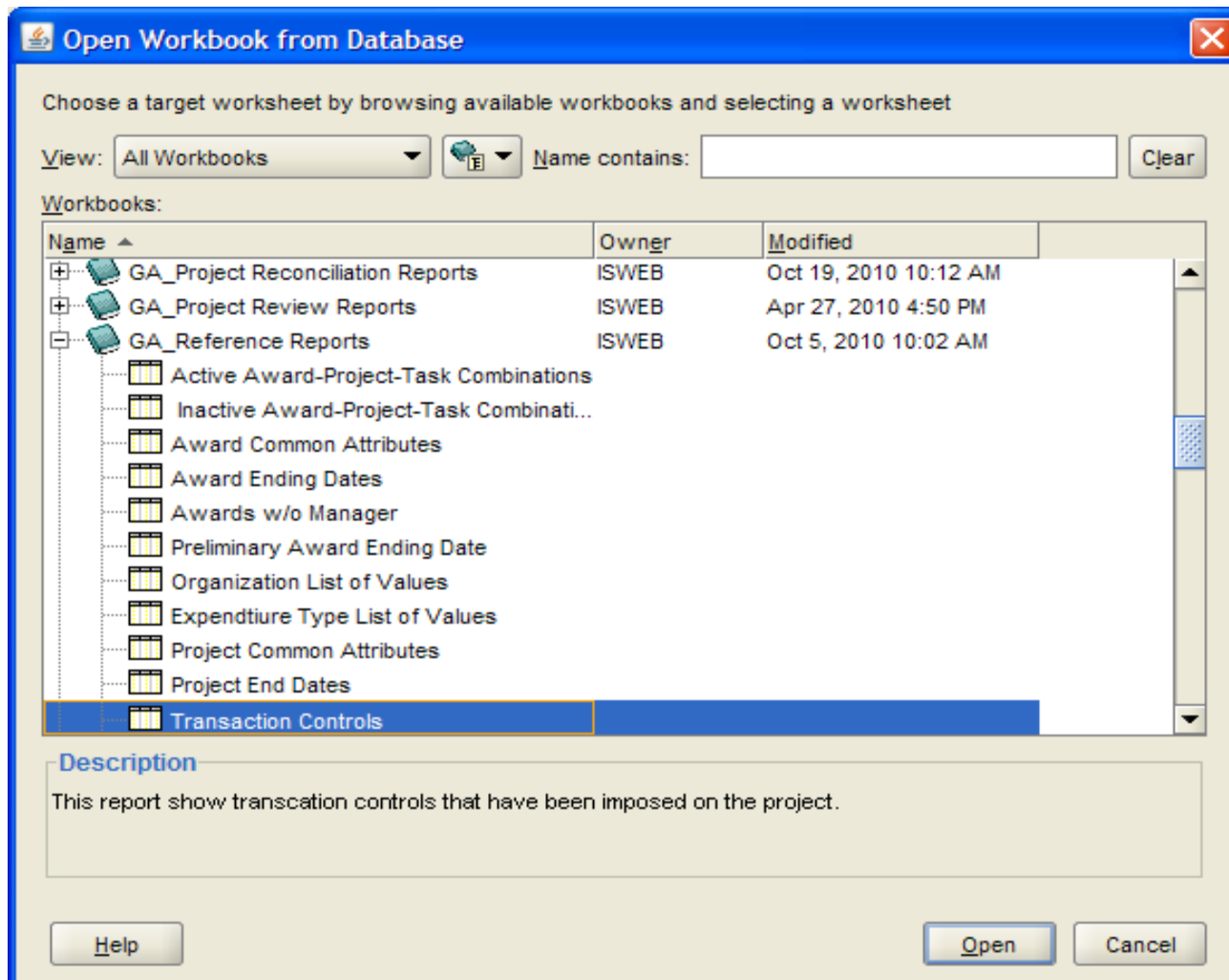
Workplan Resources Only

Expenditure		Non-Labor Resource	Employee	Scheduled Expenditure Only	Chargeable	Workplan Resources Only	Person Type	Billable
Category	Type			<input type="checkbox"/>	<input type="checkbox"/>	<input type="checkbox"/>		
Contractual Servi	Svcs, General R&M, M	<input type="checkbox"/>	<input type="checkbox"/>	<input type="checkbox"/>	<input type="checkbox"/>	<input type="checkbox"/>		No
Contractual Servi	Svcs, General R&M, P	<input type="checkbox"/>	<input type="checkbox"/>	<input type="checkbox"/>	<input type="checkbox"/>	<input type="checkbox"/>		No
Contractual Servi	Svcs, Internal Svc Pro	<input type="checkbox"/>	<input type="checkbox"/>	<input type="checkbox"/>	<input type="checkbox"/>	<input type="checkbox"/>		No
Contractual Servi	Svcs, Maint, Grounds	<input type="checkbox"/>	<input type="checkbox"/>	<input type="checkbox"/>	<input type="checkbox"/>	<input type="checkbox"/>		No
Contractual Servi	Svcs, Messenger	<input type="checkbox"/>	<input type="checkbox"/>	<input type="checkbox"/>	<input type="checkbox"/>	<input type="checkbox"/>		No
Contractual Servi	Svcs, Moving Offices &	<input type="checkbox"/>	<input type="checkbox"/>	<input type="checkbox"/>	<input type="checkbox"/>	<input type="checkbox"/>		No
Contractual Servi	Svcs, P-Card, Contract	<input type="checkbox"/>	<input type="checkbox"/>	<input type="checkbox"/>	<input type="checkbox"/>	<input type="checkbox"/>		No
Equipment	Eq NonCapital Exhibit	<input type="checkbox"/>	<input type="checkbox"/>	<input type="checkbox"/>	<input type="checkbox"/>	<input type="checkbox"/>		No

Detail

Record: 7/?

- There is also a Discoverer Plus report under GA Reference Reports → Transaction Controls
- You can run the report by individual project or by project org.



- The report also tells you whether the template being used is exclusive or inclusive.
(See <http://www.virginia.edu/sponsoredprograms/TransactionControlsHome.htm> for additional information)

ISWEB.GA_Reference Reports - OracleBI Discoverer - Windows Internet Explorer

File Edit View Format Tools Help

Arial 10 B U

Project Transaction Controls

Page Items: Project Number: 125457 Project Name: CU-UVA NCRECE Project Type: G&C - Reportable Project Status: APPROVED Project Org: 31160 CU-Human S

Control Type	Expenditure Category	Expenditure Type	Creation Date	Start Date	End Date	Billable	Chargeable
Exclusive	Continuous Charges	Insurance, Aircraft	14-MAY-2010	01-JUL-2006		N	N
Exclusive	Continuous Charges	Insurance, Worker's Comp	12-JUN-2006	01-JUL-2006		N	N
Exclusive	Continuous Charges	Insurance, Property	12-JUN-2006	01-JUL-2006		N	N
Exclusive	Continuous Charges	Insurance, Malpractice	12-JUN-2006	01-JUL-2006		N	N
Exclusive	Continuous Charges	Insurance, Automobile	14-MAY-2010	01-JUL-2006		N	N
Exclusive	Continuous Charges	Insurance, Bonds, Surety	12-JUN-2006	01-JUL-2006		N	N
Exclusive	Continuous Charges	Insurance, Boiler & Machinery	12-JUN-2006	01-JUL-2006		N	N
Exclusive	Continuous Charges	Svc Charge, Chilled Water	14-MAY-2010	01-JUL-2006		N	N
Exclusive	Continuous Charges	Insurance, Med, Summer Camp	14-MAY-2010	01-JUL-2006		N	N
Exclusive	Continuous Charges	Insurance, General Liability	12-JUN-2006	01-JUL-2006		N	N
Exclusive	Contractual Services	Professional Licenses & Fees	12-JUN-2006	01-JUL-2006		N	N
Exclusive	Contractual Services	Svcs, P-Card, Contractual	14-MAY-2010	01-JUL-2006		N	N
Exclusive	Contractual Services	Svcs, Moving Offices & Labs	14-MAY-2010	01-JUL-2006		N	N
Exclusive	Contractual Services	Svcs, Messenger	14-MAY-2010	01-JUL-2006		N	N
Exclusive	Contractual Services	Svcs, Telecom, Cell, Internet	12-JUN-2006	01-JUL-2006		N	N
Exclusive	Contractual Services	Svcs, Internal Svc Provider	14-MAY-2010	01-JUL-2006		N	N
Exclusive	Contractual Services	Svcs, General R&M, Painting	14-MAY-2010	01-JUL-2006		N	N
Exclusive	Contractual Services	Svcs, General R&M, Masonry	14-MAY-2010	01-JUL-2006		N	N
Exclusive	Contractual Services	Svcs, General R&M, Carpentry	14-MAY-2010	01-JUL-2006		N	N
Exclusive	Contractual Services	Svcs, Extermination	14-MAY-2010	01-JUL-2006		N	N
Exclusive	Contractual Services	Svcs, Maint, Grounds	14-MAY-2010	01-JUL-2006		N	N
Exclusive	Contractual Services	Svcs, Attorney	12-JUN-2006	01-JUL-2006		N	N
Exclusive	Contractual Services	Svcs, Auditing	12-JUN-2006	01-JUL-2006		N	N
Exclusive	Contractual Services	Svcs, Bottled Water	12-JUN-2006	01-JUL-2006		N	N
Exclusive	Contractual Services	Svcs, Clerical	12-JUN-2006	01-JUL-2006		N	N
Exclusive	Contractual Services	Svcs, Computer Software Maint	12-JUN-2006	01-JUL-2006		N	N
Exclusive	Contractual Services	Svcs, Fiscal	12-JUN-2006	01-JUL-2006		N	N
Exclusive	Contractual Services	Svcs, Laundry & Linen	12-JUN-2006	01-JUL-2006		N	N

Active Award-Project-Task Combinations Inactive Award-Project-Task Combinations Award Common Attributes Award Ending Dates Awards w/o Manager Preliminary Award End...